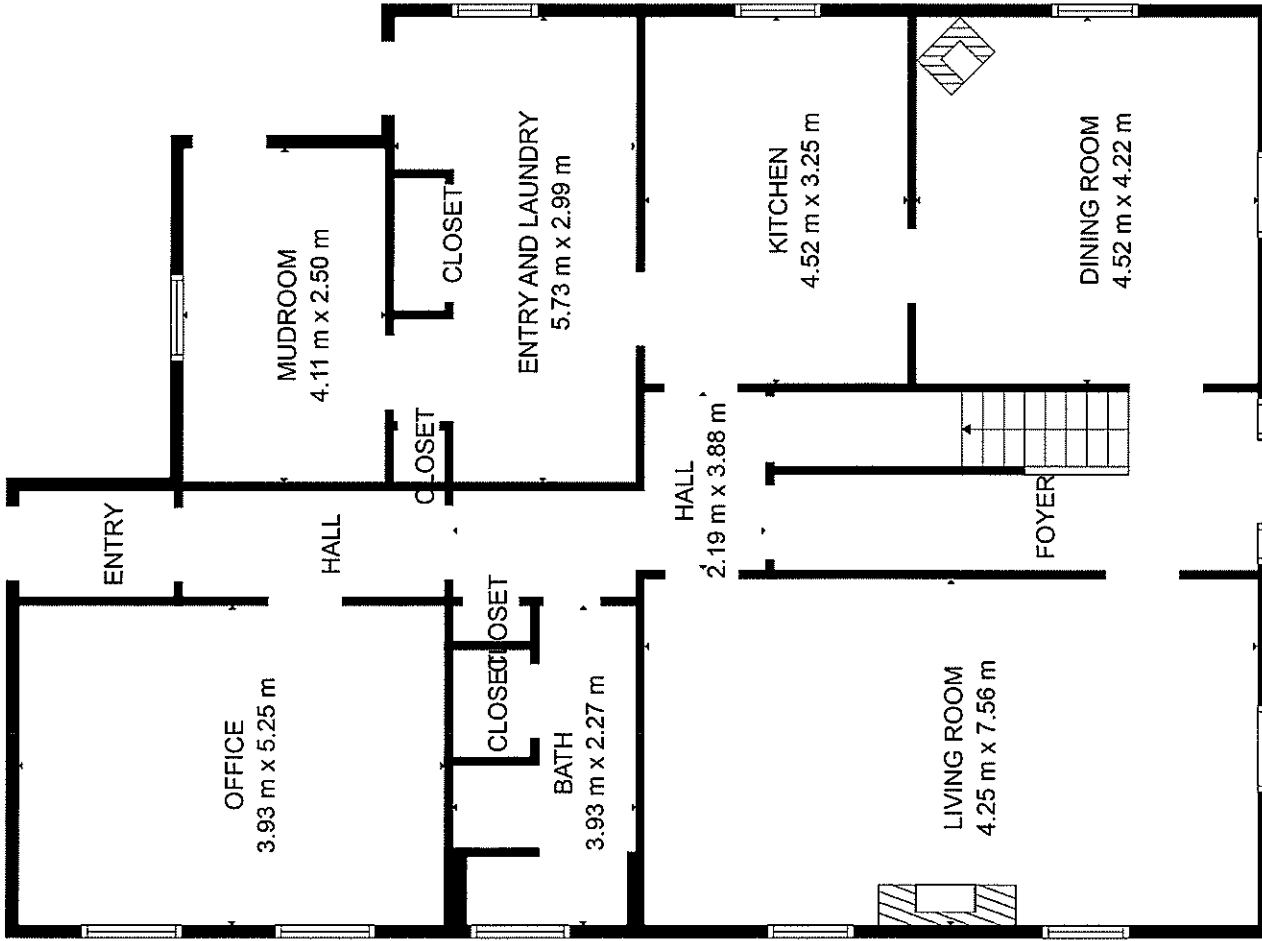
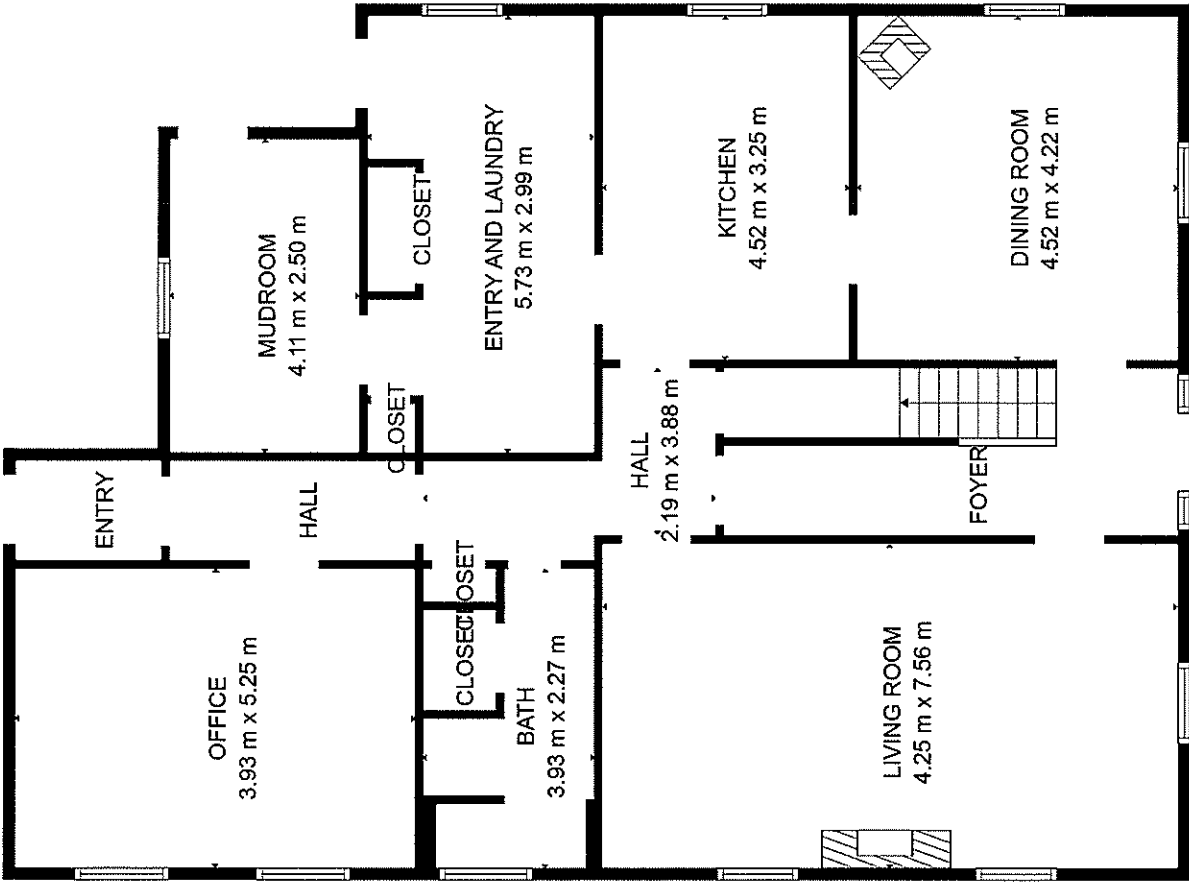




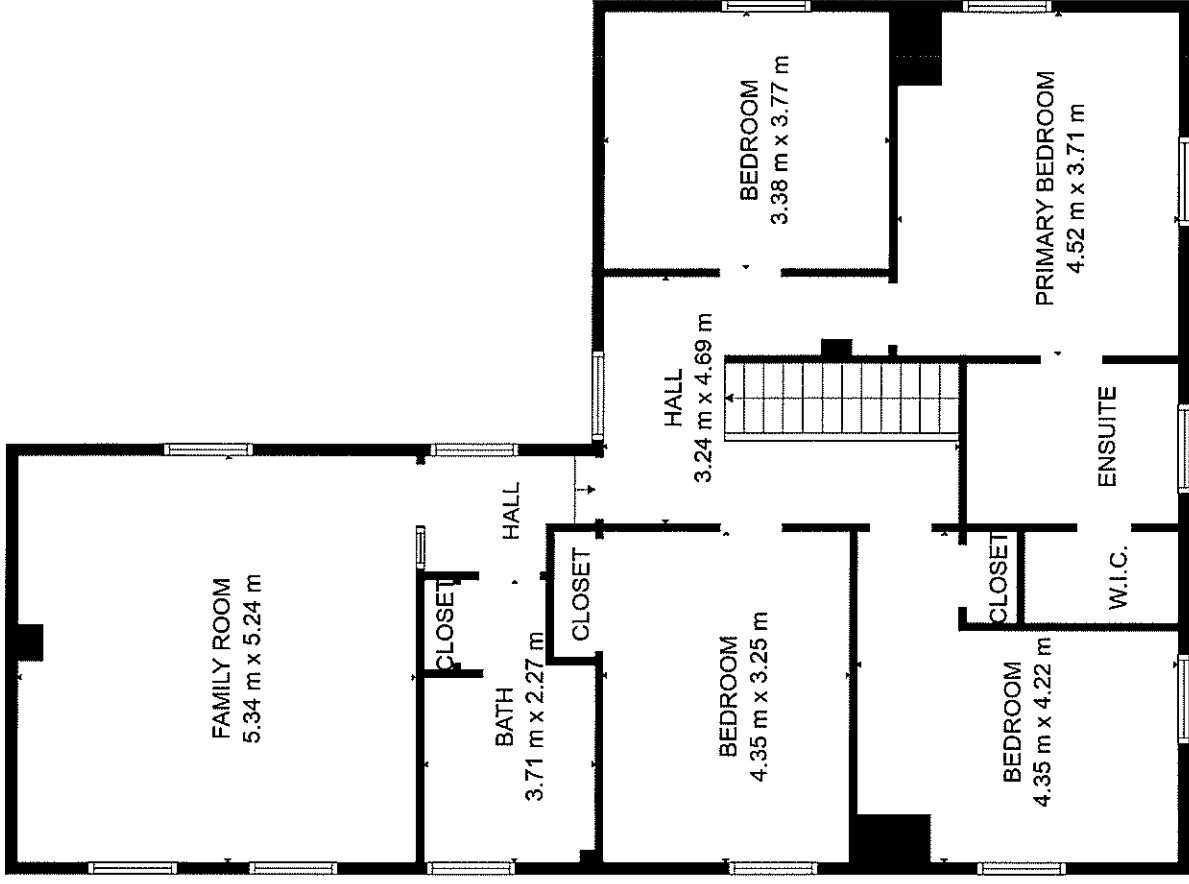
GROSS INTERNAL AREA  
 FLOOR 1: 155 m<sup>2</sup>, FLOOR 2: 126 m<sup>2</sup>  
 TOTAL: 281 m<sup>2</sup>



GROSS INTERNAL AREA  
 FLOOR 1: 155 m<sup>2</sup>, FLOOR 2: 126 m<sup>2</sup>  
 TOTAL: 281 m<sup>2</sup>

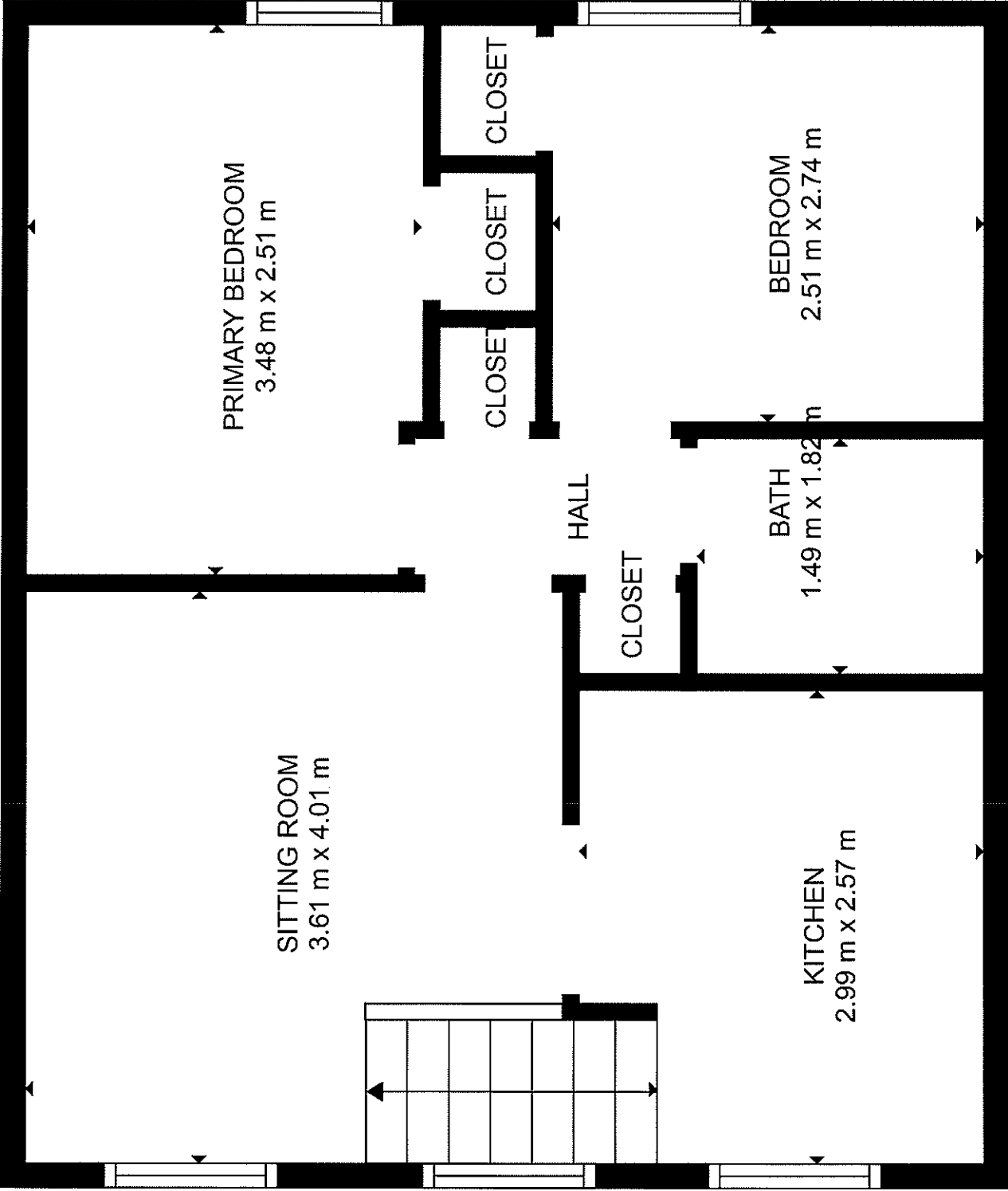


FLOOR 1



FLOOR 2

GROSS INTERNAL AREA  
 FLOOR 1: 155 m<sup>2</sup>, FLOOR 2: 126 m<sup>2</sup>  
 TOTAL: 281 m<sup>2</sup>



GROSS INTERNAL AREA  
Below Ground: 3 m<sup>2</sup>, FLOOR 2: 44 m<sup>2</sup>  
TOTAL: 47 m<sup>2</sup>

MEASUREMENTS ARE CALCULATED BY SURVEYING THE MEASUREMENTS OF THE BUILDING WITH THE CEILING